



How We are Educating People About Pipeline Safety

Having the right information about pipelines that might be in close proximity to where you live or work is important to ensuring your safety, and at Plains Midstream Canada, your safety is our top priority.



We understand the importance of being a good neighbour. Because our pipelines might cross under or near your land, or in proximity to where you live or work, we would like to provide you with information about our Public Awareness initiatives that are part of our Damage Prevention Program.

This important function seeks to provide Plains Midstream Canada (PMC) stakeholders with information about buried pipelines on their land or in vicinity to their places of work or recreation.

PMC is here
for you



Contact PMC about any aspect of our Damage Prevention Program, including:

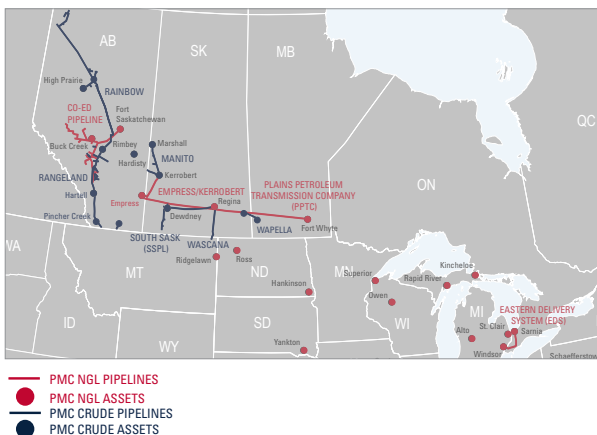
- How and why to place a One-Call
- What ground disturbance activities require permission from PMC
- What PMC is doing to protect our pipeline systems. For example:
 - air and ground patrols
 - locating and marking our pipelines when One-Calls are received
 - inspection of activities near our pipelines to ensure safety
 - in-line inspections
- Reporting any contact or damage to pipelines from a ground disturbance
- How to recognize an emergency situation and understand the necessary actions to be taken in the unlikely event of an emergency

Get educated about Damage Prevention

Our program seeks to educate communities and stakeholders with accurate, reliable and up-to-date information about our pipelines and to raise the awareness of underground infrastructure and safe ground disturbance practices. Public Awareness outreach provides this information through face-to-face visits and mailing campaigns to various stakeholders including landowners, Indigenous communities, municipalities, land developers and contractors who conduct excavation activities.

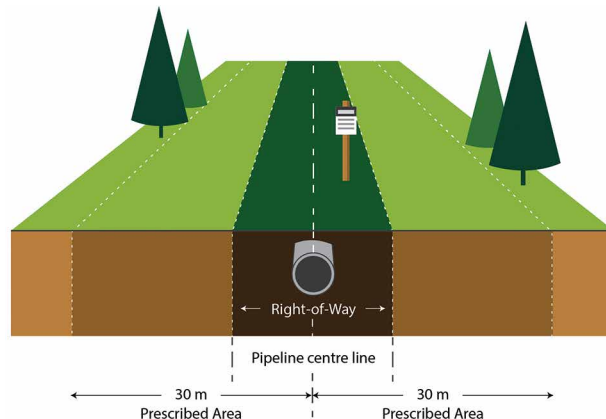
Ground disturbance activities that occur without our knowledge or consent, such as construction or excavation, are dangerous and pose a significant risk to public safety. PMC's Public Awareness team is dedicated to the education and promotion of all activities relating to our Damage Prevention Program.

We are committed to engaging in open dialogue with our neighbours, conducting operations in a manner that protects the people who live and work near our pipeline systems and caring for the surrounding environment. Through awareness, adherence to safety precautions and open communication about any concerns or issues, you can help prevent incidents and minimize their impacts.



What is a right-of-way (ROW)?

A pipeline is installed within a narrow strip of land called the ROW, which is large enough for pipeline construction and installation. PMC has acquired the rights to use this land for ongoing monitoring and maintenance of the pipelines, as set out in the agreement between the landowner and the pipeline company. Ownership of the land remains with the landowner; however, all activities on the ROW are governed by provincial and/or federal regulations; as well as the pipeline company.



What is the prescribed area?

The prescribed area (controlled area) extends 30 metres (100 feet) on each side of the centre line of pipe(s). Do not assume that the pipeline is in the middle of the ROW. The purpose of the prescribed area is to ensure the protection of pipelines from damage that may result from activities causing ground disturbance.

What is an easement?

When PMC is constructing a pipeline or facilities, we often require the use of private lands for the project. After detailed routing studies, the company will consult and then negotiate a land acquisition agreement, referred to as an easement or right-of-way agreement with the landowners. A PMC representative, usually a land agent, consults directly with landowners to negotiate and execute this agreement.

Pipeline markers

Pipeline markers indicate that a pipeline is in the area but they do not identify the exact location of the pipeline. If there are NO visible pipeline markers, there can still be buried infrastructure within the area. The markers provide important safety information, such as the pipe owner, type of product carried and the emergency contact number.



If you have any questions about any of the information on this or any other PMC fact sheet, please reach out to us at: publicawareness@plainsmidstream.com



Plains Midstream Canada

Suite 1400, 607 - 8 Avenue S.W. Calgary, Alberta T2P 0A7
 Telephone: 403.298.2100 Toll Free: 1.866.343.5182
www.plainsmidstream.com

24 HR EMERGENCY NUMBER:
1.866.875.2554



Printed on recycled paper.