

# How to Work Safely on or Near Pipelines

Plains Midstream Canada is committed to preventing third party damage to our buried infrastructure.

Activities that occur over or near Plains Midstream Canada’s (PMC) buried infrastructure (pipeline system) that have not been approved by the company may be considered unauthorized activities. Starting work without written approval could potentially jeopardize the safety of those living and working near our pipelines. Potential consequences of damage to buried infrastructure can range from service disruptions to catastrophes including serious injury, loss of life or significant environmental impact.

Damage from third party excavation around buried infrastructure is one of the most common causes of leaks and ruptures on transmission pipelines in Canada but with your help, it is entirely preventable!

## Ground disturbance activities that require approval

For any project that involves digging underground, whether it’s for construction or home maintenance, you must contact a One-Call notification centre first. That includes:



- digging
- excavation
- trenching and ditching
- tunnelling
- boring/drilling/pushing
- augering
- topsoil stripping
- land levelling/grading
- plowing to install underground infrastructure
- tree planting
- clearing and stump removal
- subsoiling
- use of explosives
- quarrying
- grinding and milling of asphalt/concrete
- driving fence posts, bars, rods, pins, anchors or pilings
- seismic exploration
- crossing of buried pipelines or other underground infrastructure by heavy loads off the travelled portion of a public roadway Ref. CSA Z247

## What about agricultural activity near pipelines?



When vehicles or mobile equipment used for agricultural purposes are operating across the pipeline, the activity is authorized if the following conditions are met:

- the loaded axle weight and tire pressures of the vehicle or mobile equipment are within the manufacturer’s approved limits and operating guidelines
- the point of crossing has not been the subject of a notification from the pipeline company that crossing at that location could impair the pipeline’s safety or security
- cultivation to a depth of less than 45cm below the surface of the ground



## Always obtain authorization – call before you dig

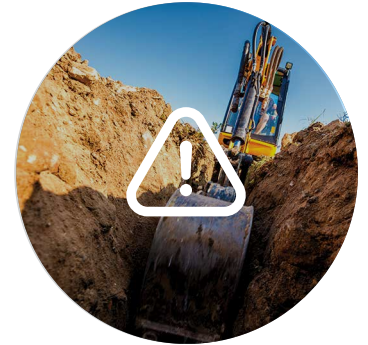


Every time you plan to conduct any excavation, either by hand or with machinery, it's critical to find out the location of buried infrastructure such as pipelines, power lines, sewer lines and communication cables. Most provinces have a One-Call service, which allows Canadians to request that the location of buried infrastructure be marked for them – it's quick, easy and free.

Work activities such as dugouts, auguring, deep tillage, or installing drainage systems, fence posts or power poles might also require a written agreement from the pipeline operator. If you are unsure if the work you have planned requires an agreement, please contact PMC for more information at [crossingrequests@plainsmidstream.com](mailto:crossingrequests@plainsmidstream.com) well in advance of your project starting.

## Why is it important to obtain authorization?

Authorizations will provide the third party with specific requirements and instructions on how they can excavate and complete their project safely. These requirements can include things like: requesting a locate, how and where the work should be conducted near the infrastructure (proximity to the pipeline, excavation methods, etc.) and if required, ensuring a company representative is present to oversee the work within the PMC right-of-way (ROW).

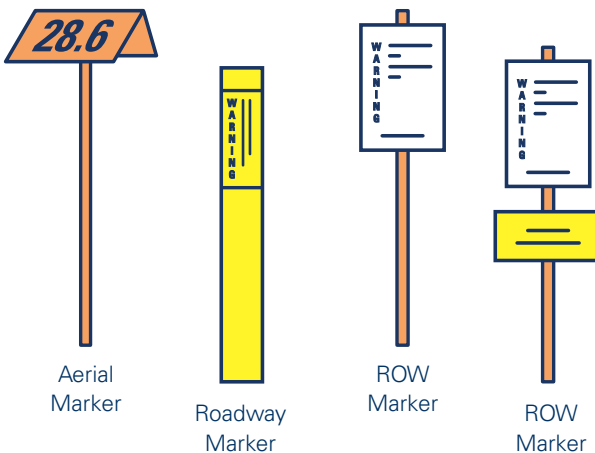


### How to dig safely

- Understand the risks of unauthorized digging near pipelines
- Place a One-Call request – no exceptions – at least three working days before your project
- Don't begin your activity until the buried infrastructure is located and marked
- Follow the instructions from PMC
- Report any damage to PMC immediately at 1-866-875-2554

### How rights-of-way are marked

Pipeline right-of-way warnings come in a number of forms and provides important safety information, such as the pipe owner, type of product carried and the emergency contact number.



## Safety Culture at PMC

PMC has a reporting culture and follows all applicable regulations related to the reporting of unauthorized activities. In order to protect the public, our employees, the environment and our assets, we track and report unsafe practices on or near our ROWs to the National Energy Board.

### What is a third party?

If you are a member of the public and are not employed or working on behalf of PMC, you are categorized as a third party.

If you have any questions about any of the information on this or any other PMC fact sheet, please reach out to us at: [publicawareness@plainsmidstream.com](mailto:publicawareness@plainsmidstream.com)



**Plains Midstream Canada**  
Suite 1400, 607 - 8 Avenue S.W. Calgary, Alberta T2P 0A7  
Telephone: 403.298.2100 Toll Free: 1.866.343.5182  
[www.plainsmidstream.com](http://www.plainsmidstream.com)

**24 HR EMERGENCY NUMBER:**  
**1.866.875.2554**

