

Potential Health Effects from LVP Products Exposure

HAZARDS	Extremely flammable. Causes skin irritation. May cause drowsiness or dizziness. May be fatal if swallowed and enters airways. May cause damage to organs through prolonged or repeated exposure. May cause cancer. May cause genetic defects. Suspected of damaging fertility or unborn children
---------	---

Response Consideration

Environment, Health & Safety

Plains adheres to the highest environmental and safety standards throughout our organization. We provide a workplace that protects the health and safety of our employees, contractors and the communities surrounding our facilities.

Plains' operations are subject to stringent federal, provincial and local laws and regulations governing the discharge of materials into the environment or otherwise related to protecting the environment.

Our Environment, Health and Safety (EH&S) Management Programs are at the core of our operations. These programs include management commitment and leadership, employee training and awareness, inspections and audits, performance and achievement recognition, emergency preparedness and response, communications and continuous improvement.



Notification

If you are contacted by Plains Midstream Canada to advise you of an emergency situation, the caller will:

- Identify themselves by name.
- Announce that they are a Plains Midstream Canada representative.
- Describe the problem and what is being done.
- Give you instructions to protect your safety (shelter / evacuation).
- Verify the information you have provided.
- Address any concerns which you may have.
- Provide a telephone number which you can call to get additional information.

Emergency Contacts

If you suspect a problem at a Plains facility in your area, please call Plains Midstream Canada's 24-hour Emergency Response number:

1-866-875-2554

In the event of an emergency, Plains will be working with the Transportation Safety Board (TSB), Canada Energy Regulator (CER), Alberta Energy Regulator (AER), the Saskatchewan Ministry of Energy and Resources (ER) and local authorities.

Transportation Safety Board of Canada (TSB)

24 Hour Pipeline Emergencies Only 819-997-7887

Canada Energy Regulator (CER)

First call should be to the TSB (see above)

24 Hour Non-Pipeline Emergencies 403-299-2773

Saskatchewan Ministry of Energy and Resources (ER)

Estevan Office 306-637-4541

Local Authorities

RM of Bratt's Lake No. 129 306-732-2030
RM of Caledonia No. 99 306-436-2050
RM of Edenwold No. 158 306-771-2522
RM of The Gap No. 39 306-454-2202
RM of Norton No. 69 306-442-2131
RM of Sherwood No. 159 306-525-5237
RM of Surprise Valley No. 9 306-969-2144

AMBULANCE/POLICE/FIRE 9-1-1

Pipeline Safety

Keeping Pipelines Safe and Reliable



Public Awareness Information for landowners and area residents related to Plains Midstream Canada's Wascana pipelines.

- Emergency notification
- Public protection measures
- Pipeline safety: Call or Click Before You Dig

JUNE 2022



Our Operations in your Area

Plains Midstream Canada ULC (Plains) is the operator of the Wascana pipeline. Portions of the Wascana pipeline are regulated by the Canada Energy Regulator (CER) and the Saskatchewan Ministry of Energy and Resources (ER).

Low Vapour Pressure (LVP) Products

The Wascana pipeline transports LVP products including sweet crude oil and condensates. These products are in a liquid state and flammable.

Main Hazards:

- Extremely flammable
- May pose an environmental hazard if large volumes are released

PMC Regina Terminal 13-33-17-19 W2M
E2 Regulated Substances: Butane
Emergency Planning Zone: 120 m

If You Suspect a Problem

Please call Plains Midstream Canada's 24-hour emergency number if you suspect a problem (1-866-875-2554).

While the chance of an uncontrolled spill or problem is remote, the Plains Emergency Response Plan (ERP) for this area is in place to ensure your safety. If a leak should occur, emergency crews will take immediate steps to minimize the risk to the public and environment.

Additional emergency response personnel will be notified and dispatched to the area to safely manage the emergency.



CLICK OR CALL BEFORE YOU DIG

To create a safe work environment for everyone, before undertaking any ground disturbance, you must contact your provincial One-Call centre. Go to www.clickbeforeyoudig.com for the One-Call information you need before conducting any ground disturbance activity within the prescribed area (which extends 30 metres on each side of the centre line of pipe). You may also require written consent for your activity, please contact Plainsatlandrequests@plainsmidstream.com for more information on permissions.

sask1stcall.com
SASK ONE-CALL 1-866-828-4888

Public Protection Measures

Evacuation, Shelter & Ignition Procedures

Evacuation Procedures

If it is necessary to evacuate, you will be contacted by telephone immediately. If there is no answer to our calls, we will proceed to your residence to inform you of the situation. The following steps should be taken if "Evacuation" procedures have been implemented:

- Gather all residents and bring any medicines required.
- Lock all windows and doors.
- Turn down thermostat and shut off any air exchange fans to outside.
- Drive safely on the route provided and proceed directly to the evacuation centre and check in with the representative.
- Wait for further instruction.

Shelter-in-Place Procedures

If you are advised to stay sheltered, do not leave your house or attempt to start any vehicles until a Plains representative advises you that it is safe to do so. The following steps should be taken if "Shelter-In-Place" procedures have been implemented:

- Immediately gather everyone indoors and stay there.
- Tightly close and lock all windows and outside doors, if convenient, tape any gaps around exterior door frames.
- Extinguish indoor wood-burning fires and close flue dampers if possible.
- Turn off appliances or equipment that either blows out or uses indoor air, such as:
 - furnaces
 - kitchen fans
 - bathroom fans
 - built-in vacuum systems
 - clothes dryers
 - gas fireplaces
 - gas stoves
 - air conditioning
 - ventilators
- Turn off appliances or equipment that suck in outdoor air, such as
 - Heating, ventilation, and air conditioning (HVAC) systems
 - Fans for heat recovery ventilators or energy recovery ventilators
 - Turn down furnace thermostats to the minimum setting, turn off air conditioners
- Leave all inside doors open.
- Wait in an interior room upstairs for further instruction.
- Avoid using the telephone, except for emergencies, so that you can be contacted by Plains emergency response personnel.
- Call Plains if you are experiencing symptoms, smelling odours or have contacted government agencies (so the response can be coordinated).
- Stay tuned to local radio and television for possible information updates.
- Even if you see people outside, do not leave until told to do so.
- If you are unable to follow these instructions, please notify Plains emergency response personnel.

After the hazardous substance has passed through the area you will receive an "all-clear" message from Plains emergency response personnel. You may also receive, if required, instructions to ventilate your building by:

- opening all windows and doors
- turning on fans
- turning up thermostats

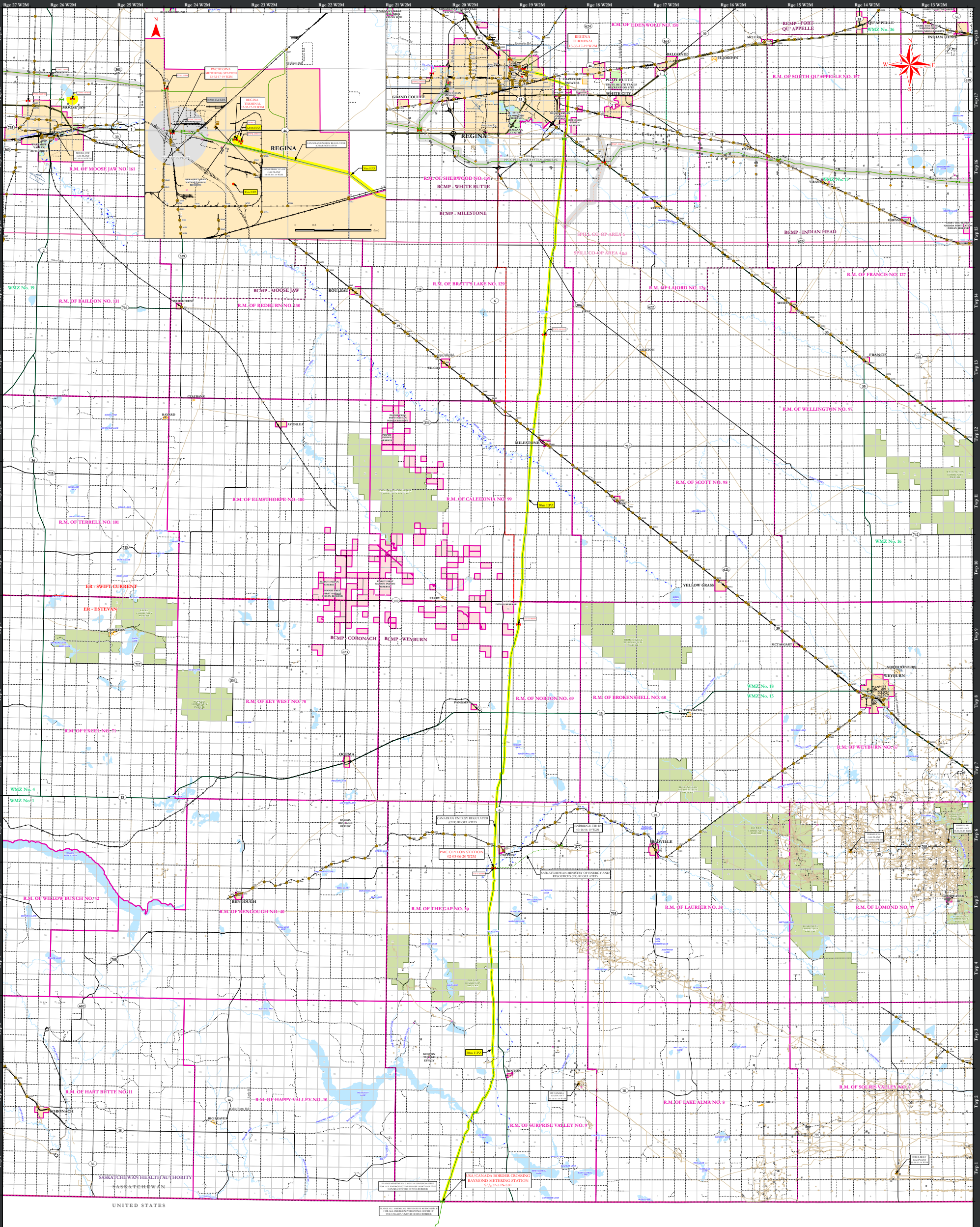
During this time the air outside may be fresher and you may choose to leave your building while ventilating. Once the building is completely ventilated, return all equipment to normal settings and operation.

Ignition Procedures

If it is determined that ignition is required, the Incident Commander is fully authorized to ignite the release at the pipeline, facility or terminal. Ignition of the gas source would ensure your safety if evacuation was not practical.




Plains Midstream Canada's
24-hour emergency number
1-866-875-2554



WASCANA PIPELINE SYSTEM

PRAIRIE PIPELINES



PLAINS
MIDSTREAM
CANADA

Draft Date: May 17, 2019 DS

Scale: 1:170,000

Map: 8716


Revision Date: June 7, 2022 ET

UTM ZONE 13 NAD83

0 5 10 20

(km)

MAP PRODUCED BY



H2Safety

h2safety.ca



- Third Party Well

Suspended Gas Well

Injection Well

Service Well

Third Party Facility

Third Party Gas Plant

Facility

HOV/MOV

Manual

Third Party Pipeline

Oil Pipeline

Discontinued Oil Pipeline

Misc. Fluids Pipeline

Discontinued Misc. Fluids Pipeline

Other Roads

Main Hwy

Divided Hwy

Railway

Airfield

Surface Development

Abandoned

Bridge

Communication Tower

Dead End

Farm Use Area

Golf Course

Gravel Pit

Locked Gate

Recreation Area

Road Blocked

Waste

Rail Crossing

River Flow Direction

Hydrology

Waterbody

Urban Area

Provincial Boundary

Protected Area

Community Pasture

First Nations Reserve

ER Field Centre

Health Authority

Local Authority

RCMP

WCSS COOP

Wildlife Management Unit

EPZ

Other PMC System EPZ